

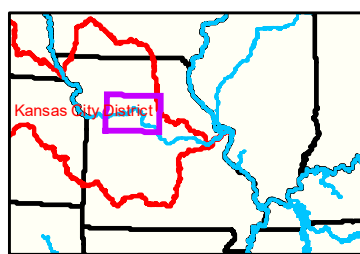
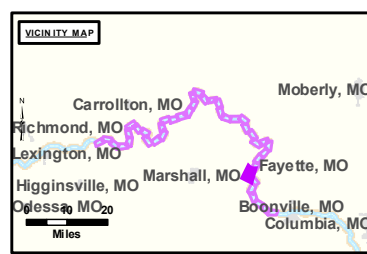
Notes

Howard County

Saline County

Glasgow Gage = 12.2 at time of collection 08 October 2020

Gage_L



LEGEND

	< 8		< 8 ft		Green Passing		Green		Green CAN
	8 - 9		8 - 9 ft		Red Passing		Red		Red NUN
	9 - 9.5		9 - 10 ft		Green Crossing		Red Crossing		
	9.5 - 10		10 - 12 ft						
	10 - 12		River Mile						
	12 - 14		Sailing Line						
	14 - 16		BSNP Structure						
	> 16		Levee						

Buoy

Green CAN
 Red NUN

Vertical Datum:
 Soundings are shown in feet and indicated depths are referenced to water surface at time of collection.

NOTES:
 Horizontal Coordinate System:
 World Geodetic System of 1984 (WGS84), projected to the Universal Transverse Mercator (UTM) Zone 15 North. Distance units in U.S. Survey Feet.

The information depicted on this map represents the results of a survey conducted on the date indicated and can only be considered to represent the general condition existing at that time.

The location of navigation aids are based on and provided by the U.S. Coast Guard.



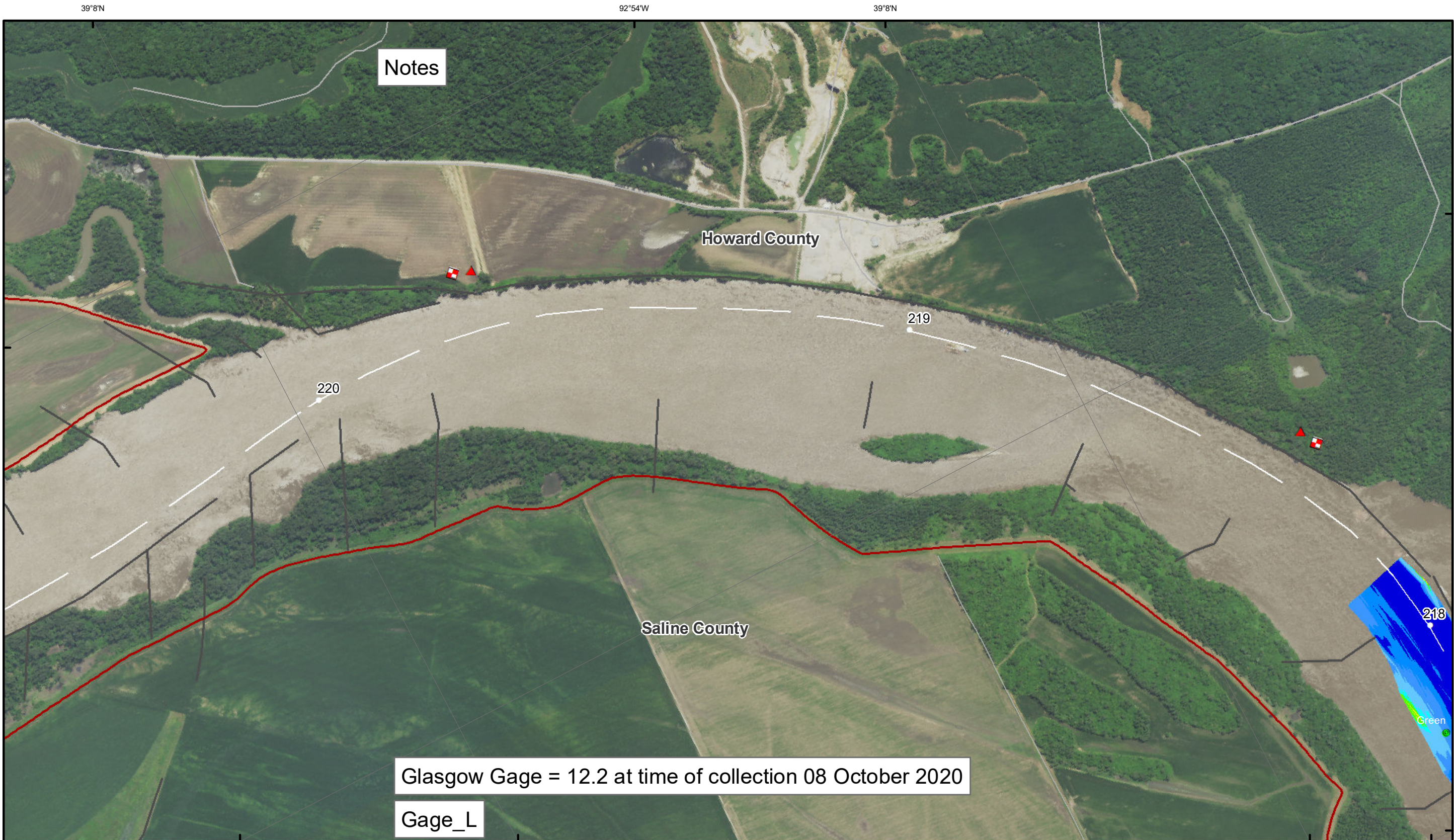
DISCLAIMER: The U.S. Army Corps of Engineers (USACE) provides this information as a service to the public. It is not intended to be used for any purpose other than that for which it was intended. The USACE does not warrant the accuracy, completeness, or reliability of the information provided. The USACE is not responsible for any errors or omissions in this information. The USACE is not liable for any damages, including consequential damages, arising from the use of this information. The USACE is not responsible for any actions taken based on this information. The USACE is not responsible for any actions taken based on this information.

KANSAS CITY DISTRICT MISSOURI RIVER AREA OFFICE	
Submitted By:	MRAO
Reviewed By:	MRAO
Approved By:	MRAO

Survey Information

MO_03_LMR
 MO_03_LMR_20201008_CS_216_8_218_1_SORT
 08 October 2020

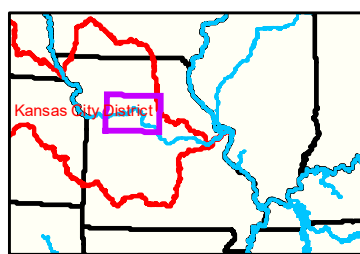
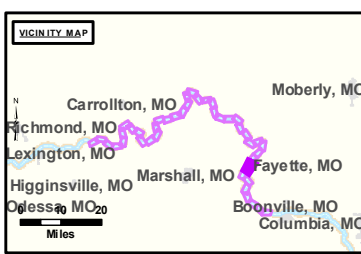
Sheet Number
 7 of 42



Notes

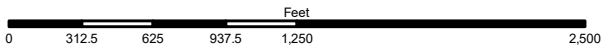
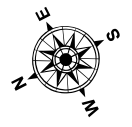
Glasgow Gage = 12.2 at time of collection 08 October 2020

Gage_L



LEGEND

	< 8		< 8 ft		Green Passing		Green		Green CAN
	8 - 9		8 - 9 ft		Red Passing		Red		Red NUN
	9 - 9.5		9 - 10 ft		Green Crossing		Junction		
	9.5 - 10		10 - 12 ft		Red Crossing				
	10 - 12		River Mile						
	12 - 14		Sailing Line						
	14 - 16		BSNP Structure						
	> 16		Levee						



NOTES:
 Horizontal Coordinate System:
 World Geodetic System of 1984 (WGS84), projected to the Universal Transverse Mercator (UTM) Zone 15 North.
 Distance units in U.S. Survey Feet

Vertical Datum:
 Soundings are shown in feet and indicated depths are referenced to water surface at time of collection.

The information depicted on this map represents the results of a survey conducted on the date indicated and can only be considered to represent the general condition existing at that time.

The location of navigation aids are based on and provided by the U.S. Coast Guard.



DISCLAIMER: The U.S. Army Corps of Engineers makes no warranty, express or implied, for the use of this information for any purpose other than that for which it was prepared. The U.S. Army Corps of Engineers makes no warranty, express or implied, for the use of this information for any purpose other than that for which it was prepared. The U.S. Army Corps of Engineers makes no warranty, express or implied, for the use of this information for any purpose other than that for which it was prepared. The U.S. Army Corps of Engineers makes no warranty, express or implied, for the use of this information for any purpose other than that for which it was prepared.

KANSAS CITY DISTRICT MISSOURI RIVER AREA OFFICE	
Submitted By:	MRAO
Reviewed By:	MRAO
Checked By:	MRAO

Survey Information
 MO_03_LMR
 MO_03_LMR_20201008_CS_216_8_218_1_SORT
 08 October 2020

Sheet Number
 8 of 42